



SALEMA ECO CAMP

CAMPING & GLAMPING

TURISMO REGENERATIVO
REGENERATIVE TOURISM

GUÍA DE BOAS PRÁTICAS
BEST PRACTICES GUIDE

2024

Título: Salema Eco Camp – Camping & Glamping

Subtítulo: Turismo regenerativo - Guia de boas práticas 2024

Autor: Salema Eco Camp

Língua original: português / **Tradução:** Chat GPT

Revisão: Sara Gaspar

Esboço capa e desenho contracapa: Xavi Reñé / @wildlife_erra

Execução gráfica: Ângela Ferreira

Edição: março de 2025

Salema Eco Camp

Urbanização Quinta dos Carriços

8650-196 Budens, Portugal

-

Website: www.salemaecocamp.com

Redes sociais: @salemaecocamp / @nazarirestaurante / @ecostore_salema

OPENING MESSAGE

With simplicity, humility and our courage.

Coming from different parts of the world, we all bring a diverse footprint of life, shaped by our origins, traditions, customs, experiences, and journeys.

By choice, we find ourselves "here and now" at Salema Eco Camp. Rethinking our place in the world, we create an environment where people can experience change through small daily actions - at work, in sharing, in socializing...

Every choice - from energy consumption to resource use - is a step toward preservation. Yes, we are in a space to be preserved.

This guide reflects the spirit of commitment and the skills of our entire team, which we value and seek to enhance.

Now, we invite you to read on and be part of it!

Operational Management, Palmira Guimarães

SUMMARY

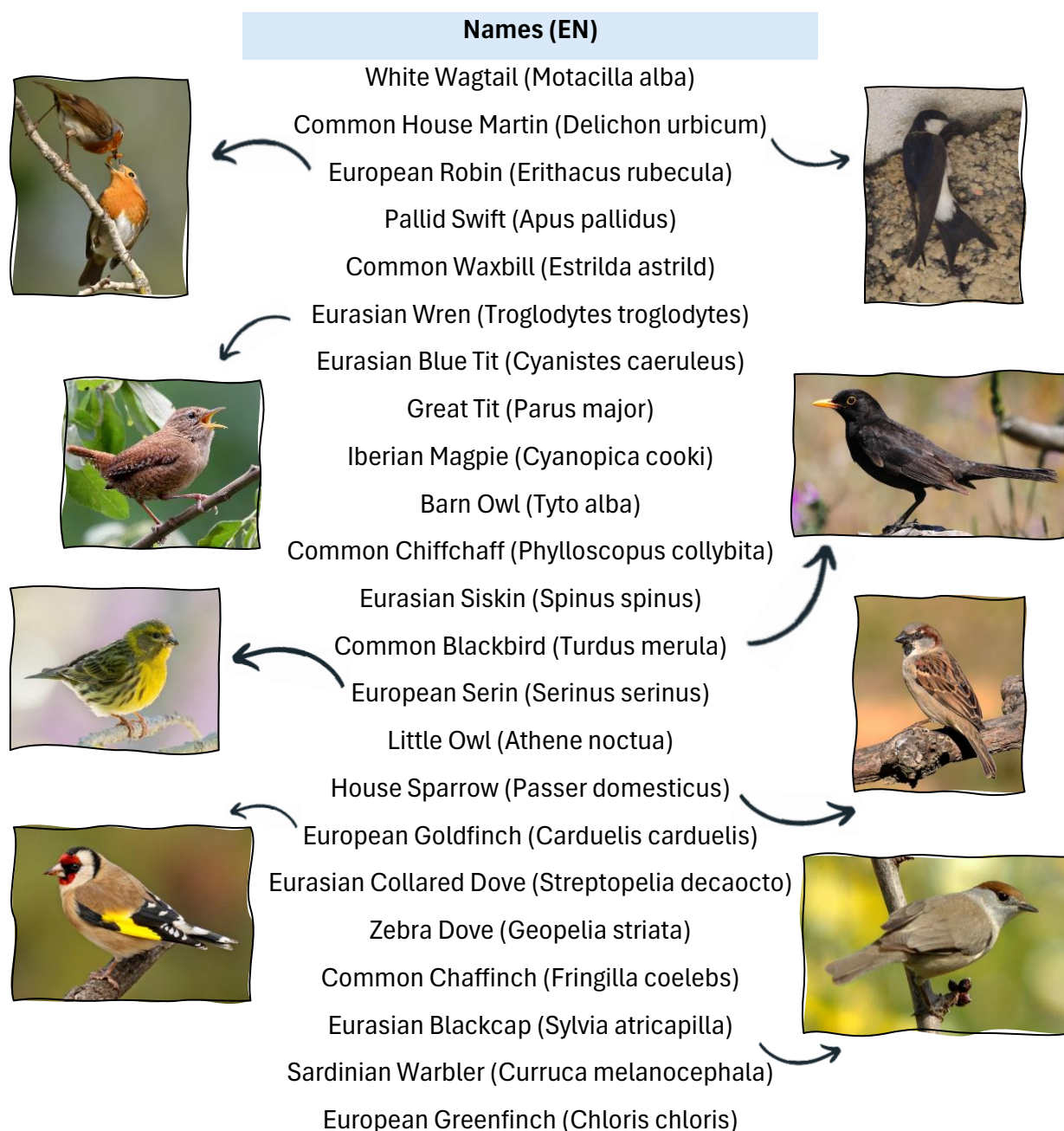
In the heart of Nature, where sustainability is the essence, a tourism space and an ecology school flourish, guiding us toward a future in harmony with the planet. This small guide is divided into best practices in "Nature Conservation," "Sustainability and Regeneration," "Salema Eco Camp Teams," and "Inspiration Visits" to other entities working in tourism and/or regeneration.





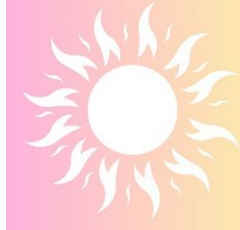

GOOD PRACTICES IN CONSERVATION

BIRDS INSIDE THE PARK

In 2024, a quarterly inventory of the birds observed in the park and identifiable was conducted for the first time. This work was carried out with the collaboration of bird enthusiasts, and we extend special thanks to David Santos, from the Salema Eco Camp maintenance team, and Anastasiia Veselieva, daughter of a member of the Housekeeping team. We concluded that there are 20 resident species and 3 species that inhabit the park almost all year round [White Wagtail (*Motacilla alba*), Common House Martin (*Delichon urbicum*), and European Robin (*Erithacus rubecula*). Image credits: avesdeportugal.info



During the cold season and the transition to spring (January to March), we recorded 11 bird species passing through the park. In the spring and the transition to summer (April to June), we detected 11 species, many of which were migrating. During the summer (July to September), 9 species were present temporarily in the park. In the autumn and the transition to winter, 11 bird species migrated and/or stayed in our park.

			
Common Buzzard (Buteo buteo)	Barn Swallow (Hirundo rustica)	Booted Eagle (Hieraaetus pennatus)	Booted Eagle (Hieraaetus pennatus)
Crested Lark (Galerida cristata)	Common Swift (Apus apus)	Common Swift (Apus apus)	Grey Wagtail (Motacilla cinerea)
Woodlark (Lullula arborea)	White Stork (Ciconia ciconia)	Crested Tit (Lophophanes cristatus)	Common Stonechat (Saxicola rubicola)
Spotless Starling (Sturnus unicolor)	Long-tailed Tit (Aegithalos caudatus)	Long-tailed Tit (Aegithalos caudatus)	Long-tailed Tit (Aegithalos caudatus)
Blue Rock Thrush (Monticola solitarius)	Tawny Owl (Strix aluco)	Willow Warbler (Phylloscopus trochilus)	Common Raven (Corvus corax)
Black-winged Kite (Elanus caeruleus)	Spotless Starling (Sturnus unicolor)	Eurasian Sparrowhawk (Accipiter nisus)	Spotless Starling (Sturnus unicolor)
Common Kestrel (Falco tinnunculus)	Iberian Chiffchaff (Phylloscopus ibericus)	European Pied Flycatcher (Ficedula hypoleuca)	Cattle Egret (Ardea ibis)
Great Spotted Woodpecker (Dendrocopos major)	Black Kite (Milvus migrans)	Hoopoe (Upupa epops)	Eurasian Magpie (Pica pica)
Common Linnet (Linaria cannabina)	European Pied Flycatcher (Ficedula hypoleuca)	Eurasian Nuthatch (Sitta europaea)	Black Redstart (Phoenicurus ochruros)
Black Redstart (Phoenicurus ochruros)	Hoopoe (Upupa epops)		Common Treecreeper (Certhia brachydactyla)
Cetti's Warbler (Cettia cetti)	Cetti's Warbler (Cettia cetti)		Pin-tailed Whydah (Vidua macroura)

Highlight of 2024 - During this year, we highlighted an iconic species spotted in the park, one that is hard to ignore: the Hoopoe (*Upupa epops*). It has a long, narrow, and slightly curved beak. Its crest is unmistakable and is usually raised for brief moments, typically when it lands. It spends most of its time on the ground, searching for worms and insects to feed on. During the breeding season (once a year), it chooses tree cavities or ruins to build its nest.



Source: wilder.pt



Source: Salema Eco Camp

This assessment should be carried out more frequently as new planting and water cycle revitalization actions are taken, also within the context of climate change. The purpose of repeating this assessment is related to conservation efforts, and if possible, the regeneration of the park's avifauna.

“This morning, it was a pleasure to wake up at Salema Eco Camp. With the light rain, sunshine in the morning, and the bird migration season, there is a lot of biodiversity in the songs heard these days, especially on days like today. It is likely that today at sunset and tomorrow at sunrise, we will hear their joy again”.

27th September, Ângela Ferreira

BUTTERFLIES INSIDE THE PARK

This year, in 2024, we began a weekly Butterfly Tour in the park to find the park's daytime butterflies and discuss some of their characteristics. In April, we had training with a volunteer from Tagis, Luís Cardoso, a photographer fond of these creatures, with whom we created a basic scenario with the butterflies of the park. Thus, Salema Eco Camp, driven by the dream of conserving lepidopterans and creating value through their observation, launched a weekly tour. With this tour, we also contributed to the Butterfly Census project, managed by Tagis, an association for butterfly conservation in Portugal.

Nineteen visits were made between May 15 and September 27, during which 18 different species were detected, and a total of 329 observations were recorded. Around 40 clients participated in these weekly tours.

Here are the records of some of the observations, with special mention of the Gatekeeper (*Pararge aegeria*) – the most common species, with 95 observations – and the Spanish Festoon (*Charaxes jasius*) – the park's most iconic butterfly species due to its size and colors, observed 29 times.

Clouded Yellow

Maravilha

Colias crocea

Flies all year. Voa todo o ano. Wingspan/Envergadura: 45-55mm.



Swallowtail

Cauda-de-andorinha

Papilio machaon

Flies from February to November. Voa de fevereiro a novembro. Wingspan/Envergadura: 60-80 mm.



Cleopatra

Cleópatra

Gonepteryx cleopatra

Flies all year. Voa todo o ano. Wingspan/Envergadura: 50-65mm.



Green hairstreak

Rubi

Callophrys rubi

Flies from February to May. Voa de fevereiro a maio. Wingspan/Envergadura: 26-30 mm.



Small copper

Acobreada

Lycaena phlaeas

Flies all year. Voa todo o ano. Wingspan/Envergadura: 23-30 mm.



Lorquin's Blue

Azulinha-dos-calcários

Capito lorquini

Flies from April to May. Voa de abril a maio. Wingspan/Envergadura: 22-28 mm.



Spanish Marbled White

Ines

Melanargia ines

Flies from April to September. Voa de abril a setembro. Wingspan/Envergadura: 45-55 mm.



Southern gatekeeper

Guarda-portões-pequena

Pyrönia cecilia

Flies from April to September in hot and dry places/boa de abril a setembro em lugares quentes e secos. Wingspan/Envergadura: 27-32 mm.



Speckled wood Malhadinha

Pararge aegeria

Flies all year. Voa todo o ano.
Wingspan/Envergadura: 38-46mm.



Two-tailed pasha Borboleta-do-medronheiro

Charaxes jasius

Flies from march to november. Voa de março a novembro.
Wingspan/Envergadura: 65- 80mm.



ORCHIDS INSIDE THE PARK

This year, we started tracking the wild and native orchids of the region that are present in the park. This foundational work was done with the help of Luís Cardoso, who gave a presentation for guests and staff in April. Next year, we aim to take new actions to preserve the species detected so far in the park, such as organizing tours for their observation and marking an area for their conservation. For now, here are the six different species found:

Dark bee-orchid

Ophrys fusca

Flowers from mid February to end of April.



Yellow bee-orchid

Ophrys lutea

Flowers from mid February to end of April.



Mirror orchid

Ophrys speculum ssp. speculum

Flowers between mid February and end of April.



Small-flowered tongue-orchid

Serapias parviflora

Flowers from April to May.



Constricted tongue-orchid

Serapias parviflora

Flowers from April to mid May.



Pyramidal orchid

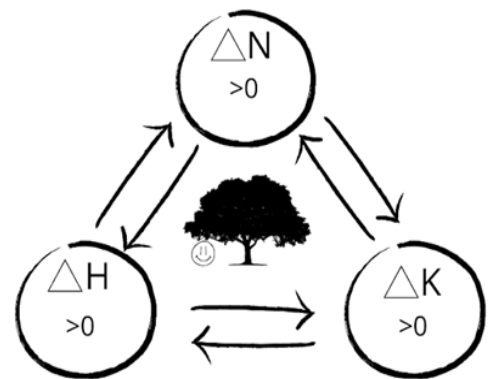
Anacamptis pyramidalis

Flowers from April to June.



GOOD PRACTICES IN SUSTAINABILITY & REGENERATION

In November 2023, a new team was formed at Salema Eco Camp, the result of the dream and courage of the partners and management. A team that was created to think about the future of tourism with actions in the present. A team that other tourism administrators still look at timidly or with fear of its importance, but the partners of Salema Eco Camp decided to be at the forefront. Thus, the Sustainability and Regeneration (SER) team was born. The tasks performed by this team include management and fieldwork, as well as promoting nature-related activities for guests, staff, and the local community.



N=Natureza | H=Humano | K=Capital Financeiro

The extremely strong sustainable (regenerative) management model of Salema Eco Camp, where the capitals are not interchangeable with each other.



CONNECTION WITH NATURE - REGENERATION

As members of a newly created regeneration team, responsible for maintaining our green areas and for the requalification process of various camping sites, it is important that we incorporate what we believe in into our work and serve as an example of how to fulfill our role in this company, integrating economic sustainability with ecological regeneration.

That said, in 2024, with the acquisition of a bio-shredder, we began processing green material from maintenance pruning and reusing it as organic matter for soil cover, often used in our regenerative projects.



Regeneration workshop for staff (May 2024)



Regeneration workshop for clients (February 2024)

In these projects, we also started using compost, a product from our composting facility, where we transform organic waste from our restaurant and clients into a valuable, nutrient-rich product that helps our crops grow and thrive.

It is with great satisfaction that we see the results of our work grow each day, transforming our camping areas into places more embedded in a landscape that brings our clients and staff a greater connection with nature.

SER team, Pedro Teixeira

A SUSTAINABILITY MANAGER

I am often asked, “So, what do you do in your job?” This is a new role in the corporate market, with concrete images of the tasks still being developed and evolving. In the context of Salema Eco Camp, this role leads operations for sustainable environmental and social management, improves ecological and socially responsible processes, formulates, implements, and monitors the sustainability strategy, and enhances the company’s processes and procedures. It drives greater efficiency and reduces the water, carbon, waste, and energy footprints. It also manages partnerships (with universities, NGOs, etc.), communicates sustainability efforts, applies for certifications and industry awards, and oversees nature conservation within the park, among other activities essential to daily operations.

In short, this position is responsible for the company’s Environmental, Social, and Governance (ESG) initiatives.

SER team, Ângela Ferreira

ZERO WASTE – WE ARE ON THE ROAD!



In 2024, the most significant project undertaken in terms of best practices was the journey to make Salema Eco Camp a ZERO WASTE space. We are developing this work in collaboration with ZERO – Associação Sistema Terrestre Sustentável and Zero Waste Europe. Through this partnership, we conducted two quantitative and qualitative analyses of both customer and operational waste. From these studies, we drew key conclusions: unsorted waste amounts to 2.13 kg per overnight stay, with 41% consisting of organic waste that should be separated. In response, we initiated the composting process within the facility in August. The qualitative analysis highlighted the need to create a station for recycling items beyond what we already collected (paper, glass, and plastic/metal). We now offer dedicated collection points for clothing and footwear, electrical and electronic equipment, light bulbs, pens, batteries, cork stoppers, and coffee capsules. This new recycling station was inaugurated in December and is located next to the existing recycling island. Following the motto "1st reduce, 2nd reuse, and 3rd recycle," we encourage everyone—clients, staff, and the local community—to carefully consider the products and waste they bring to the park. We also invite them to use our "Sharing Spot," located below the reception, to share, exchange, or take items.

In 2025, new actions will be taken to further advance this initiative.

SER team, Ângela Ferreira



First waste audit with ZERO (may)



Second waste audit with ZERO (june)

COMPOSTING – THE ORGANIC WASTE CYCLE

In August 2024, we began composting at Salema Eco Camp after receiving training, setting up the composters, and making other necessary preparations. At the start of the process, we paid close attention to every detail. Temperature and humidity measurement have become part of our daily routine. Workshops were held during Composting Week from November 27th to December 3rd, where we raised awareness among both the clients and the team at Salema Eco Camp about the process, which further boosted the amount of waste being transformed. Between August and the end of 2024, we estimate having collected around 10 tons of bio-waste.

It is rewarding to be part of this process, knowing that we can recover about 41% of organic waste from a regular bin and repurpose it for useful purposes. The first matured compost product was used on the trees planted during the Soil Workshop as part of the Magusto celebrations at the eco camp. We returned the compost to nature, contributing to sharing and socializing among people, thus closing the cycle.

SER team, Diogo Ferrão



WASTEWATER TREATMENT PLANT – RECYCLING WATER

The idea of building a Wastewater Treatment Plant (WWTP) arose from the need to be more resilient and independent, given the circumstances surrounding water scarcity in the region. With this infrastructure, we are able to reuse water at least once more before it is reintroduced into the soil through our irrigation system. Yes! The water we treat in the WWTP is used, among other things, to support our ecological regeneration project, where we upgrade camping spaces with higher quality and a stronger connection to nature. We treat between 10m³ to 50m³ of water daily through this process.

SER team, Pedro Teixeira



WWTP in construction



Display of the informational poster on the ecological functions of the WWTP



Regular analyses of treated water

GREENHOUSE: CREATING LIFE

Regenerative agriculture has the benefits of increasing crop resilience, enhancing biodiversity, and creating more fertile soils. For this reason, we built a greenhouse in 2024, with both an indoor and outdoor area to propagate and sow the plants we want to see in the park.

Goals: Increase the productivity, profitability, and efficiency of plants, boost regeneration, stratification, and reforestation on the farm, promote crop diversity, encourage autonomy by creating our own stock, and reduce expenses on plant purchases.



Greenhouse of Salema Eco Camp

Purposes: Provide controlled plant growth, protect plants from climate variations (maintain ideal humidity and temperature conditions), control sun exposure through areas with more or less shade and minimize pest and disease attacks.

In this space, we store work tools, agricultural products, plants (herbs/vegetables), trees, seeds, tray plantings, cuttings for propagation, seed beds, biomass from plant waste and derivatives. In this area for preparing soil/earth for pots

(with different mixtures), we store regular soil, manure, compost, mulch, straw, and ashes/charcoal.

Soon, we want to hold workshops and lectures within the space full of LIFE.



Plantation activity

SER team, Nelson Araújo

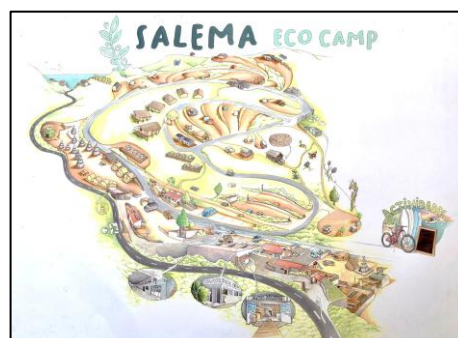
GOOD PRATICES IN SALEMA TEAM

THE HEART OF AN ECOLOGICAL PLACE

Reception is a place to receive, and this year we set ourselves the goal of paying attention to the art of welcoming.

In this proposal, we were given an internal challenge that was not just about welcoming clients, but also about embracing all the experiences we encounter at the reception.

The art of good hospitality encompasses the art of welcoming clients, departments, mistakes, and ourselves, as well as our colleagues. Next year, it will again be a focus for us to practice this concept. It is an experience that will serve us for life.



New map of the park

The reception, being the heart of the park, aims to convey our identity with warmth. Embracing change puts us in a place of great acceptance.

Reception team, Karolina da Matta

THE LOUD SILENCE OF NIGHT

Among the various experiences we have had here, I highlight the fact that we take advantage of nature and the space of Salema Eco Camp in a way that our colleagues and visitors usually don't: the experience of the night.

The sound of the waves on Salema Beach is a good example. During the day, it's hard to hear the waves crashing on the sand, as the various external noises get in the way. But at night, there is a calm and serene silence here, and after midnight, the impression we have is that we are on the beach.

The sound of the wind and the stream are other sounds we enjoy during our shift, reminding us of the vivid connection between Salema Eco Camp and Nature.

Finally, I mention the calmness of the campsite while carrying out our rounds. We pass between the caravans, tents, and accommodations and realize that dozens of people are enjoying the same atmosphere as us. However, our senses, as night shift workers, become sharper.

Reception team, Thiago Melo



WE ARE HERE TO LEAVE THE WORLD A BETTER PLACE

A french-speaking couple checked into our space, both individuals with serious mobility difficulties, but extremely friendly and positive. Since I speak French, I have been assisting this couple with anything they may need. Since their arrival, I have provided support in various situations that arose, such as: the lady uses a machine that suffered an accident, breaking an essential part for it to function. As I had already communicated a lot with this couple, they immediately shared the situation with me and (with great pride) the entire team came together to try to resolve the problem while they awaited a new machine. In the end, we found a temporary solution that allowed the couple to return to their home country to exchange the device.



Basic Life Support Training
with local authorities

I have formed a bond of friendship and affection with these two people, who, despite their great difficulties, always manage to have a smile on their faces, a joke to tell, or a kind word. In my experience, this type of situation and mutual help, whether at our workplace or elsewhere, makes us and the world a better place.

Maintenance team, Diogo Carvalho

TOWARDS MODELS OF MUTUAL TRUST AND COLLABORATION



Training and workshop about
Sociocracy with ORLA Design

The choice of a participatory approach in the decision-making process and problem-solving contributed to the creation of an environment with a strong sense of community and belonging, almost like a true family. This collaborative model not only strengthened mutual trust but also consolidated the idea that this is a space for sharing and cooperation, resulting in a significant increase in engagement and participation from everyone.

In communication with the customer, we redesigned the park map and created information boards, some of which are reusable, strategically placed to ensure better guidance. Additionally, we developed new signage using hand tools and natural shading techniques, which gave it an aesthetic that perfectly blends with the environment, without compromising clarity and functionality. ❤️

Communication team, Sara Gaspar

CARING IS VALUING

Working in the Housekeeping team at Salema Eco Camp is a unique experience. Our mission goes beyond keeping everything clean and tidy; we aim to ensure that guests feel in harmony with nature and the environment around them. Here, the routine starts early, and each day is special.

The first task is always checking the common areas. We observe every detail, from the tables to the floor, and make sure everything is ready for the start of the day. We are a true team, where each of us has a very clear role, and this makes the work much lighter.



Plantation with housekeeping



Eco-cleaning products

Working at Salema Eco Camp requires special attention to the materials we use. As we are in a sustainable environment, we always strive to use eco-friendly and reusable products. Guests highly value this, and our commitment to the environment is something we are proud of.

Besides keeping the campsite clean, our work also involves engaging with guests. Sometimes, while organizing the outdoor areas, we are approached by someone who wants to know more about the camp's history or outdoor activities. We enjoy sharing our ecological philosophy and seeing the visitors' enthusiasm is truly rewarding.

Throughout the day, tasks follow one after another, and no matter how tiring it may be, we feel a great sense of satisfaction when we finish our work and see the campsite shining with cleanliness and organization. At night, when everything is calm and the lights begin to glow softly in the distance, we are happy knowing that we made a difference for those who chose this place to rest and connect with nature.



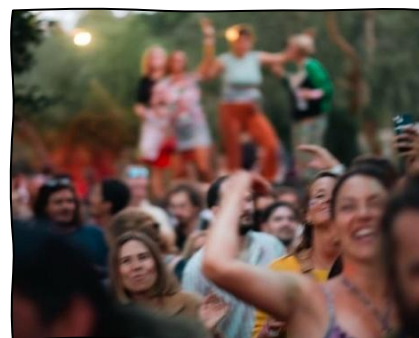
It is here, at Salema Eco Camp, where we feel part of something bigger, a mission that respects the planet and cares for the people who come from different corners of the world. At the end of the day, the smile of a satisfied guest is our greatest reward.

Housekeeping team,

Alla, Iryna, Zhanna, Anastasiia, Nataliya, Liliana, Helena, M^a Luísa, Ariana

SUN, EARTH, AIR, WATER AND... CULTURE!

As the person in charge of the culture department, my rich experience has been creating environments where our artistic partners could experience Salema Eco Camp as a space surrounded by nature and with a contemplative character, thus bringing a closer connection between the artist and the audience.



Spring and summer events



MADU singer in ItinerART event

We have had major musical names, always supporting and ensuring that our partners had success. The human support in these agreements was crucial for them to feel the courage to continue doing what they love most, which is art and sharing it. Without a human touch, and without accompanied care, these partnerships would not have been possible.

We hosted an artistic residency with the theme of the 4 elements, and it was very rewarding that Salema Eco Camp served as the backdrop to help complement the idea of the power of these elements. It was an event that passed like a cultural breeze, essential for inspiring all those who took the time to engage with art embedded in nature. We are grateful for opening these spaces.



Artistic residence "The Magnificent Four" Vernice Contemporanea



ESTAR – Theatre Encounters
produced by MÃOZORRA

The support of the teams and teamwork is always an opportunity to improve communication. It is a work that will always be refined, thus creating a desire to find more communication tools.

Culture team, Karolina da Matta

GOOD PRACTICES IN THE RESTAURANT

The Nazari Restaurant seeks to minimize the environmental impact of its activities through concrete actions, including the following:

 <p>Baixa pegada carbónica Low carbon footprint (Até / less than 999g)</p>	<p>Batata Doce assada Moussaka Vegan Caril de Grão com Espinafre Feijoada de Choco Pizza Las Vegans</p>
 <p>Média pegada carbónica Medium carbon footprint (De/From 1000g até/to 1999g)</p>	<p>Bowl de Couscous com humus Pizza margarita Pizza Al Tono Pizza Algarve</p>
 <p>Alta pegada carbónica High carbon footprint (Mais de / Over 2000g)</p>	<p>Pizza Havaiana Pizza Duo Pizza Napolitana Calzone Moussaka Souvlaky Peito de frango salteado Esparguete à bolonhesa Pizza Salami Calabresa</p>

- Reduction of packaging in purchased and sold products, opting for multi-dose products. This is particularly evident in its beverage offerings, with the exclusive sale of draft beers, filtered water, fruit-based juices, and the elimination of packaged juices and soft drinks, among other examples.
- Promotion of the sale of products from organic farming or local producers, with the entire wine, tea, and coffee menu meeting this criterion.
- Choice of a menu with dishes mainly made from plant-based products and minimal use of meat.
- Privilege of paper free from bleaching processes, particularly in napkins and takeaway boxes.
- Promotion of recycling, with waste separation and placement in collection or composting containers.

- Mitigation of its carbon footprint by informing customers about the amount of carbon associated with the production of each dish on the menu, thus giving them the opportunity to make an informed choice.

Restaurant Nazari, Nuno Pancadas

INSPIRING VISITS

VISIT TO VALE DA LAMA, LAGOS

Vale da Lama, 2nd March: Salema Eco Camp was present at the open day of Vale da Lama to learn about the New Discoveries Project (PND) and the different areas of the space.

Zone 1 - Experimental point of wild transition between dry and wet areas.



Zone 2 - Fruit production with trees and shrubs planted at high density. Soil covered with biomass to retain moisture. Control of insects and weeds through simple and ecological systems such as the "chicken tractors".

Zone 3 - Composting with earthworms and worms, compost tea, native indigenous soil mixed with molasses and fermented wheat flour without oxygen (in sealed barrels) for inoculation of other soils.



Zone 4 - Agroforestry originally designed to receive more water, is currently transitioning to a system with plants more resistant to water scarcity.



Zone 5 - Experience of the "Huglebed" planting technique, which involves creating a bed of biomass and dead matter covered with inoculated soil, to be used for planting afterward. It has several advantages, including reducing the amount of water needed for the plants.

"The entire project inspired us, especially the smart, holistic land management approach, ecological concerns (no use of chemicals), the seasonality and diversity of crops, the different types of composting, the use of earthworms to improve soil quality, and the strengthening of native soil. It would be interesting to create a composting area at Salema Eco Camp, inspired by the Vale da Lama model, and engage the community through workshops, educational walks, and creating a small educational route to identify native and medicinal plants."

Nelson Araújo and Diogo Ferrão

VISIT TO TERRA SINTRÓPICA AND HERDADE DE ALAGÃES, MÉRTOLA

Terra Sintrópica, 31st October: Being an association of agroecology and regeneration based in Mértola (Alentejo) launched the project “TUI.Field->to Fork. Portugal” on October 31st. In this project, they aim to bring together entities involved in tourism, food, and regenerative agriculture to share best practices, inspire, and create partnerships for the development of territories.

Between moments of theater, painting, and music about the importance of water and the river to the territory, a snack made only with seasonal local products was enjoyed at the municipal market, followed by discussions on the points of inspiration in the territory and visions for its future in 2040. In the municipality's community kitchen, we had a common soup for dinner, where each person brought a vegetable, and there was time for networking. One of the most important parts: bringing together various local entities to defend the goals of territorial development and future paths.



Principles of regeneration: Learn, celebrate, adapt and go deeper



The (r)evolution of thinking sustainability. In the community kitchen of Mértola.

Herdade de Alagães, 1st November: Two members of Salema Eco Camp stayed at a regenerative tourism space with several ongoing research projects and regenerative agrosilvopastoral production. The breakfast was almost entirely made with food from the estate, transformed by the hands of Mrs. Maria and Elsa, staff members of the estate. During the morning, a training session on Purpose-Driven and Responsible Tourism was held for the staff. This training took place within the context of an exchange of best practices between these two tourism establishments, both dedicated to regenerative tourism: Salema Eco Camp (Budens, Vila do Bispo, Algarve) and Herdade de Alagães (João Serra, Mértola, Alentejo).



AFTERWORD

"**Here and Now**" is our daily mantra that drives us to look at all the work we've done with a critical and clinical eye, always striving to do more: more simply, more fairly, more naturally, more urgently.

This incredible account of our last journey of 2024 speaks to that. Like an epic, the path we have traveled has been of supreme richness and profound authenticity.

Indeed, the creation of the SER team and its integration with the already existing teams has led to countless sketches, ideals of a just society, musings on the value of words, the search for truth, and the work accomplished. The script for this team was vague, innocent, and naïve. We can say idealistic... transforming hours of brainstorming into tangible reality and the creation of life is an achievement that fills us all with pride and awe.

All the points mentioned in this book are goals reached in record time, with limited financial resources and extreme dedication from everyone. We are proud to have become autonomous this year in calculating our carbon footprint (under the supervision of ZERO). Without a doubt, **the greatest achievements were the installation of a wastewater treatment plant, the planting of thousands of new trees and other plants and the regeneration of an entire way of thinking.** This book inspires souls and exhales nature.

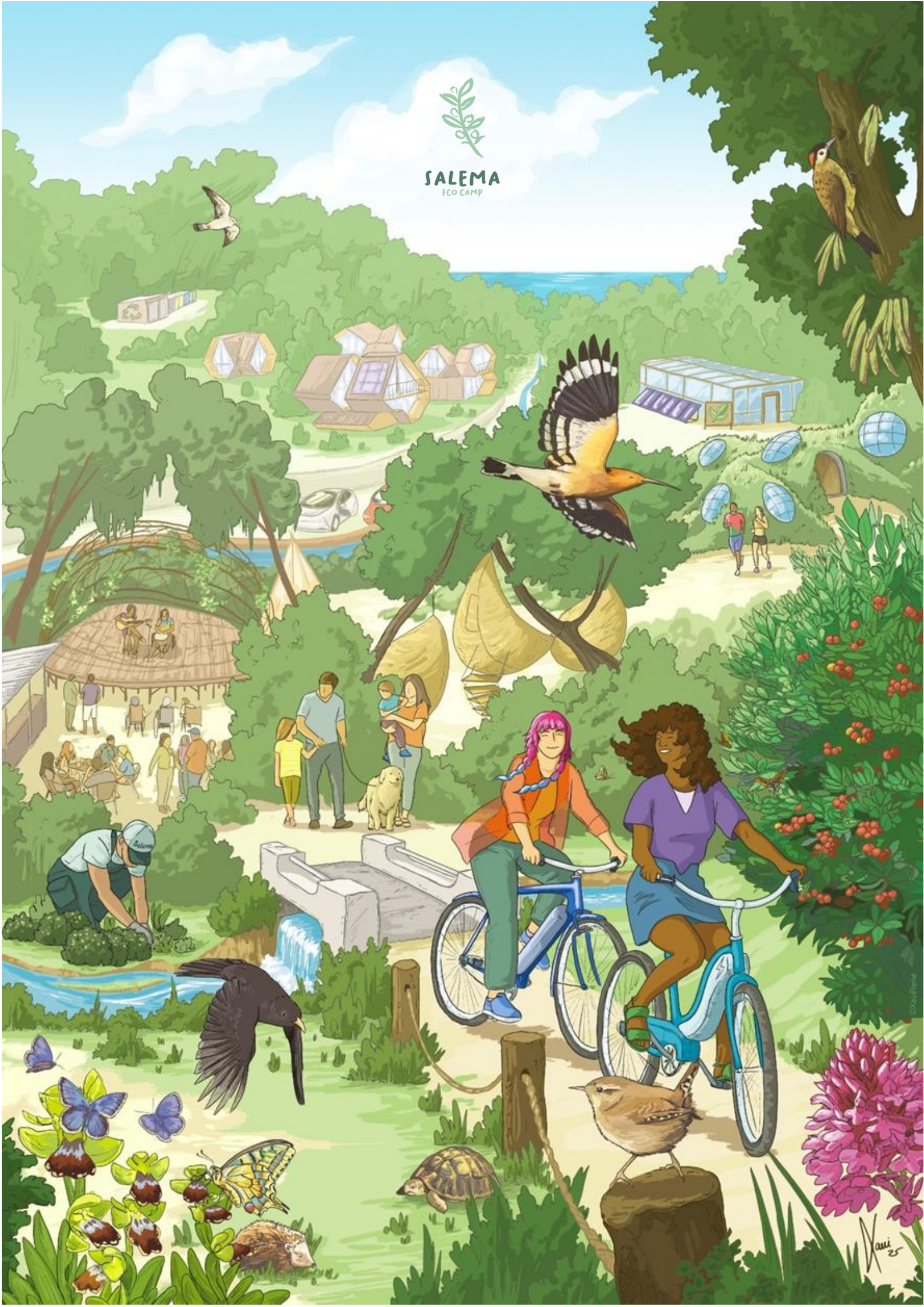
With the same philosophy as always, we believe that at every corner there is a friend, and in every face, equality. We open our home and our project to all those who wish to participate. Whether for academic, experimental, knowledge-sharing purposes, socializing, as a guest, or with the desire to change the paradigm of what regenerative tourism is: join us.

Together, we are stronger. We dream of tomorrow.

*Salema Eco Camp Managers,
Joaquim Lourenço e Filipa Lourenço*



SALEMA
ECO CAMP



Xani
25